

Low-Profile
Semi-Automatic
Stretch Wrap Machine



HANDLE-IT® SA Series

Model 600
Model 800
Model 800XHT
Model 850PS
Model 850PSXHT

Model 1100AC

Model 1200UL



Part Number: SWM-SA-1100AC

Full Set of Functions & Options

Power Pre-Stretch Carriage

Auto-Cutoff Standard!

Technical Specifications

Wrap Height	86"
Turntable Diameter	59"
Max Pallet Size	48" x 80" (93" Diagonal)
Turntable Height	3"
Weight Capacity	4,400 lbs
Pre-Stretch	250% Powered
Power Supply	110V, 10 Amp
Total Machine Footprint	105" long x 60" wide
Machine Weight	900 lbs
Turntable Speed	13 RPM

Handle-It® Model 1100AC

The Handle-It® Model 1100AC offers top-of-the-line functions and features at a great price. It is ideal for those who are looking for an efficient machine capable of handling high volumes of pallets per day.

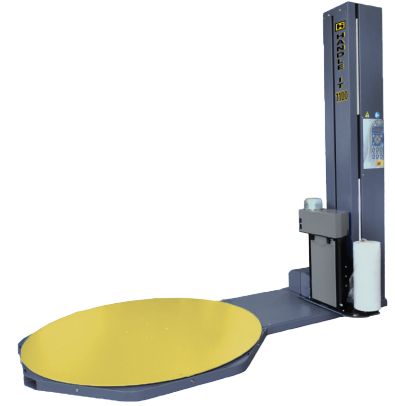
Standard features on the 1100AC include auto film cutoff, 250% powered pre-stretch, user-friendly PLC control panel, braked turntable, and many other elements cleverly designed to make this unit a must-have in any facility looking to improve and streamline their packaging operations.

www.handleitinc.com
Ph: 800-236-1080

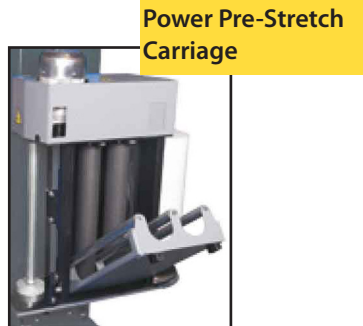
HANDLE-IT®

HANDLE-IT®*Semi-Automatic Stretch Wrapper***Model 1100AC****Product Specifications**

- User-friendly PLC control board
- Frequency controller for carriage and/or turntable speed adjustment
- Photocell for pallet height detection
- Safety stop at the base of the carriage
- Stop at 0 position
- Easily adjustable parameters such as bottom wraps, top wraps, carriage ascent & descent speed, film tension, & starting wrap height
- Quick selection of 6 main parameters or saved programs
- USB port to upload software and download settings, reports, and statistics
- 6 working cycles: ascent/descent, topsheet, only ascent, only descent, layers, and stack
- 3 working modes: semimanual, semiautomatic, or fixed height
- Storage of 32 end user programs
- Acoustic warning at the cycle start and stop
- On-board diagnostics
- Wrapped pallet counter
- Braked turntable at end of cycle
- 59" diameter turntable loading surface
- Up to 13 RPM turntable speed
- 4,400 lb maximum load weight
- 48" x 80" (93" diagonal) maximum pallet size *ensure area is clear for over-swing*
- Up to 250% film pre-stretch with electronic power pre-stretch motor
- 3 year warranty



1100AC PLC
Control Panel



Power Pre-Stretch
Carriage



Up to 118" Diameter

Available Options

- Integrated Scale
- Loading Ramp
- Adjustable Power Pre-Stretch up to 400%
- Roping System
- 118" Max Wrap Height
- Remote Control
- Top Press
- Photocell for Dark Loads
- Feet Under the Machine
- Cold Environment Kit